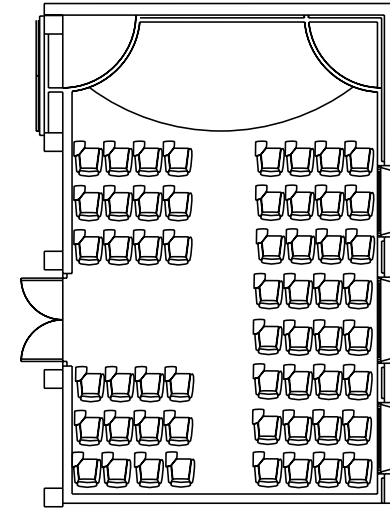
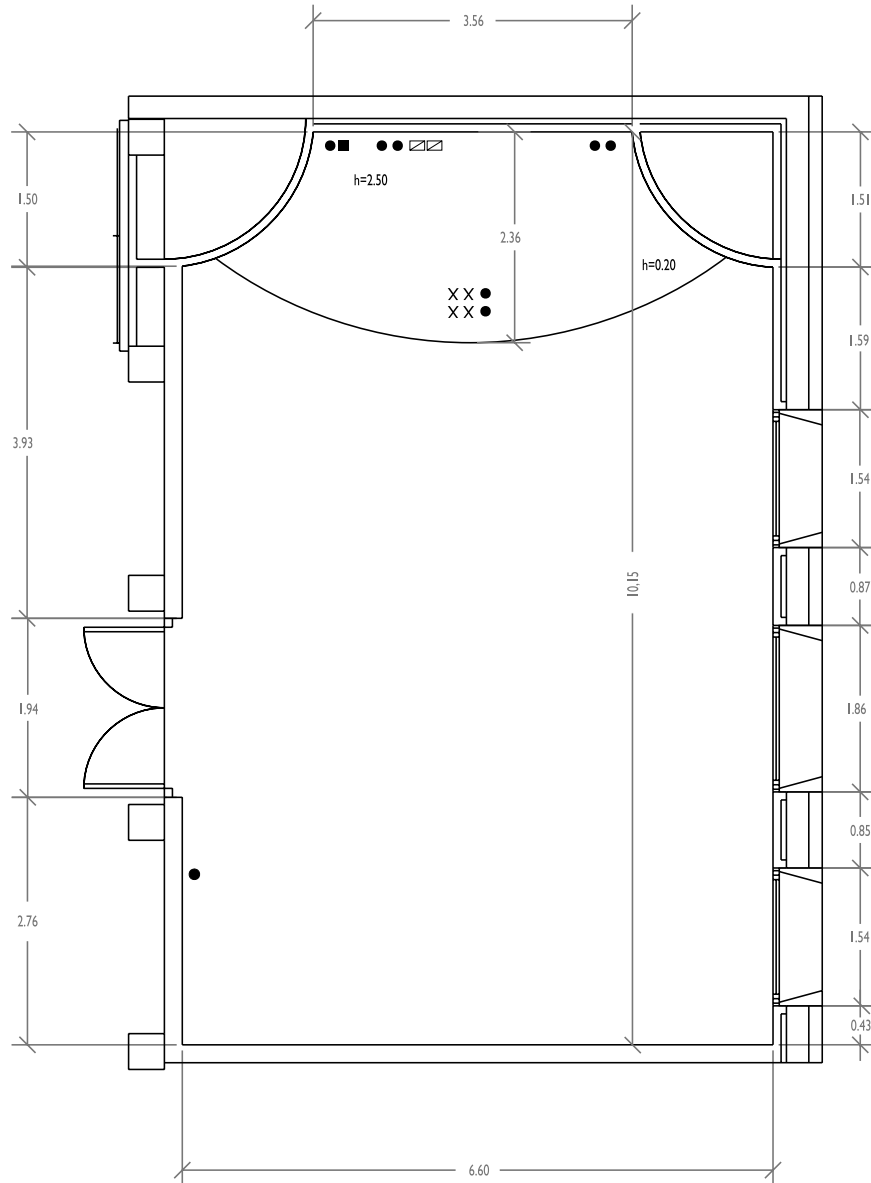
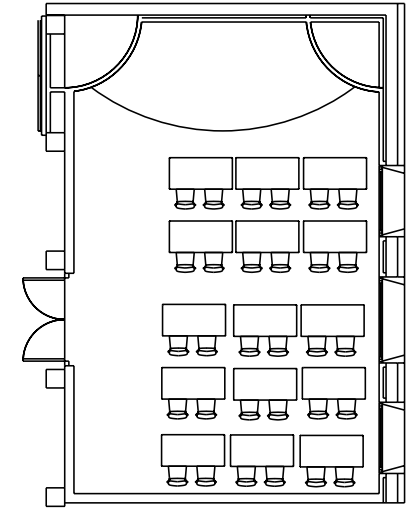


# LA PALMA ROOM

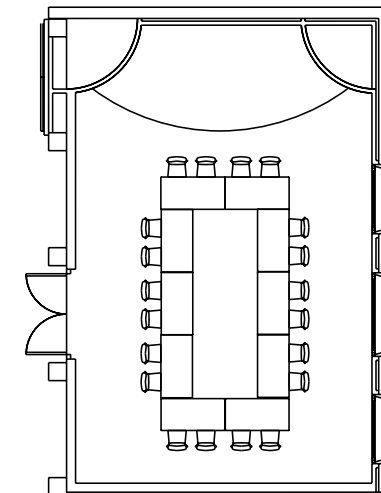
(TOTAL: 67 m<sup>2</sup>)



CAPACITY: 55 PEOPLE



CAPACITY: 30 PEOPLE



CAPACITY: 20 PEOPLE

- ▨ AUDIO DISTRIBUTION SWITCHBOARD
- X V+D POINT
- POWER POINT 10/16A
- TV MONITOR POINT



## DESCRIPTION

Room located at basement level [-2] of the Convention Centre with the following specifications:

Capacity: 55 people in theatre layout	Surface: 67 m <sup>2</sup> (6.6 x 10.15 m)
30 people in classroom layout	Height: 2.50 m
20 people in imperial layout	Stage: 9.80 m <sup>2</sup>
	Stage height: 0.20 m

## FURNISHINGS

- Chairs and tables in theatre, classroom or imperial layout. In case of theatre layout, possibility of chairs with notepad arm.
- Lectern, table and chairs for the presidency.

## EQUIPMENT AND SUPPLIES IN THE ROOM

- Local megaphony (fixed microphones in the presiding table).
- Air conditioning.
- Ambient lighting and power points (10/16 A).
- Data lan, image and data transmission.
- Fire detection, alarm, evacuation and extinction services.

## OPTIONAL SERVICES

- Equipment for sound and image projection and recording.
- Simultaneous translation cabins with infrared system.
- Videoconferencing.
- Cordless megaphony.
- Floral decoration.
- Signwritin.
- Audiovisual, light and sound and decor assembly technicians, congress hostesses, translators, security guards, etc.