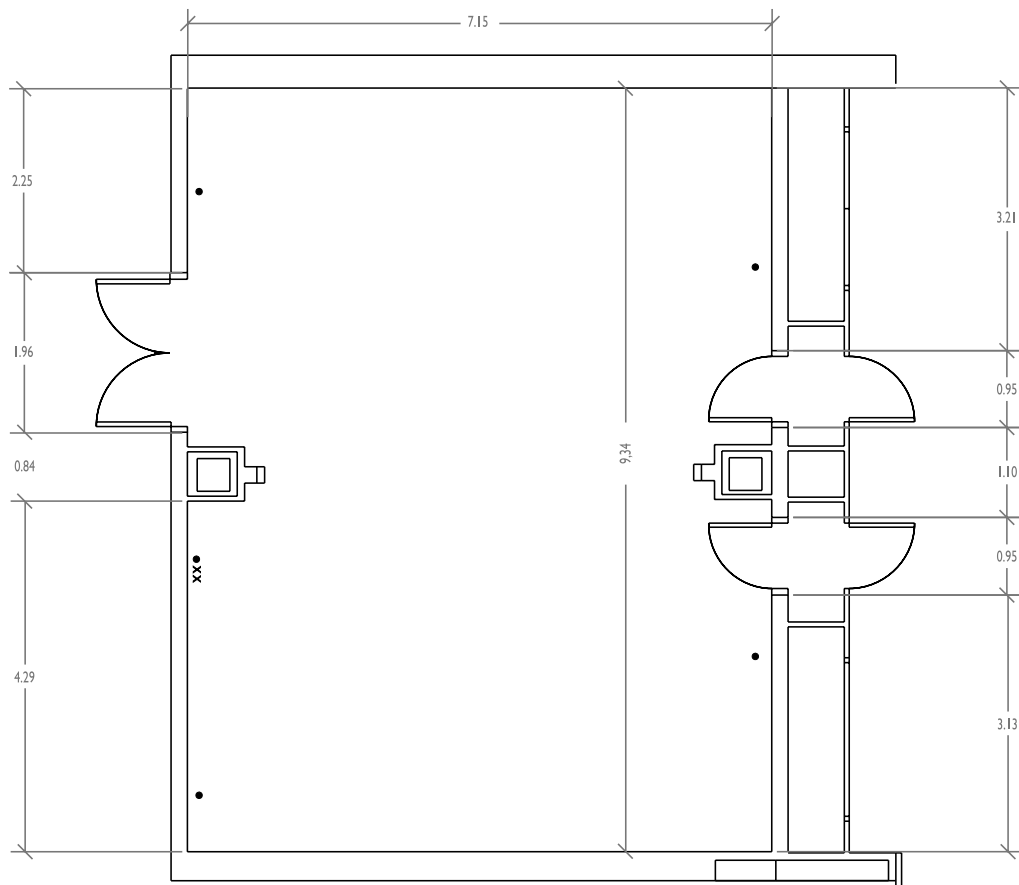
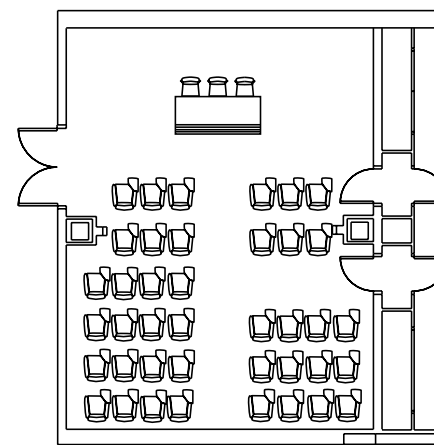


LA GOMERA AND EL HIERRO ROOMS

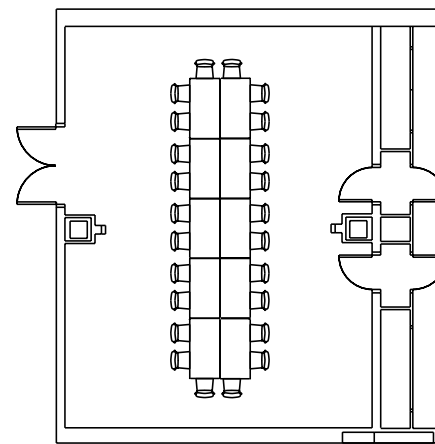
(TOTAL: 66.78 m²)



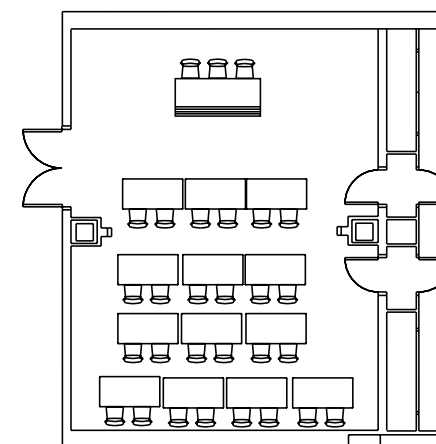
X V+D POINT
● POWER POINT 10/16A



CAPACITY: 34 PEOPLE



CAPACITY: 24 PEOPLE



CAPACITY: 26 PEOPLE



DESCRIPTION

Rooms located at lower level [-1] of the Convention Centre with the following specifications:

Capacity : 34 people in theatre layout	Surface: 66.78 m ² (7.15 x 9.34 m)
26 people in classroom layout	Height: 2.66 m
24 people in imperial layout	

FURNISHINGS

- Chairs and tables in theatre, classroom or imperial layout. In case of theatre layout, possibility of chairs with notepad arm.
- Lectern, table and chairs for the presidency.

EQUIPMENT AND SUPPLIES IN THE ROOM

- Air conditioning.
- Ambient lighting and power points (10/16 A).
- Data lan, image and data transmission.
- Fire detection, alarm, evacuation and extinction services.

OPTIONAL SERVICES

- Room megaphony (fixed microphones in the presiding table).
- Equipment for sound and image projection and recording.
- Simultaneous translation cabins with infrared system.
- Videoconferencing.
- Cordless megaphony.
- Floral decoration.
- Signwriting.
- Audiovisual, light and sound and decor assembly technicians, congress hostesses, translators, security guards, etc.